



RUSSO ENGLISH | AUSTRALIA

RUSSO SCHOOL OF HOTEL
& TOURISM | AUSTRALIA

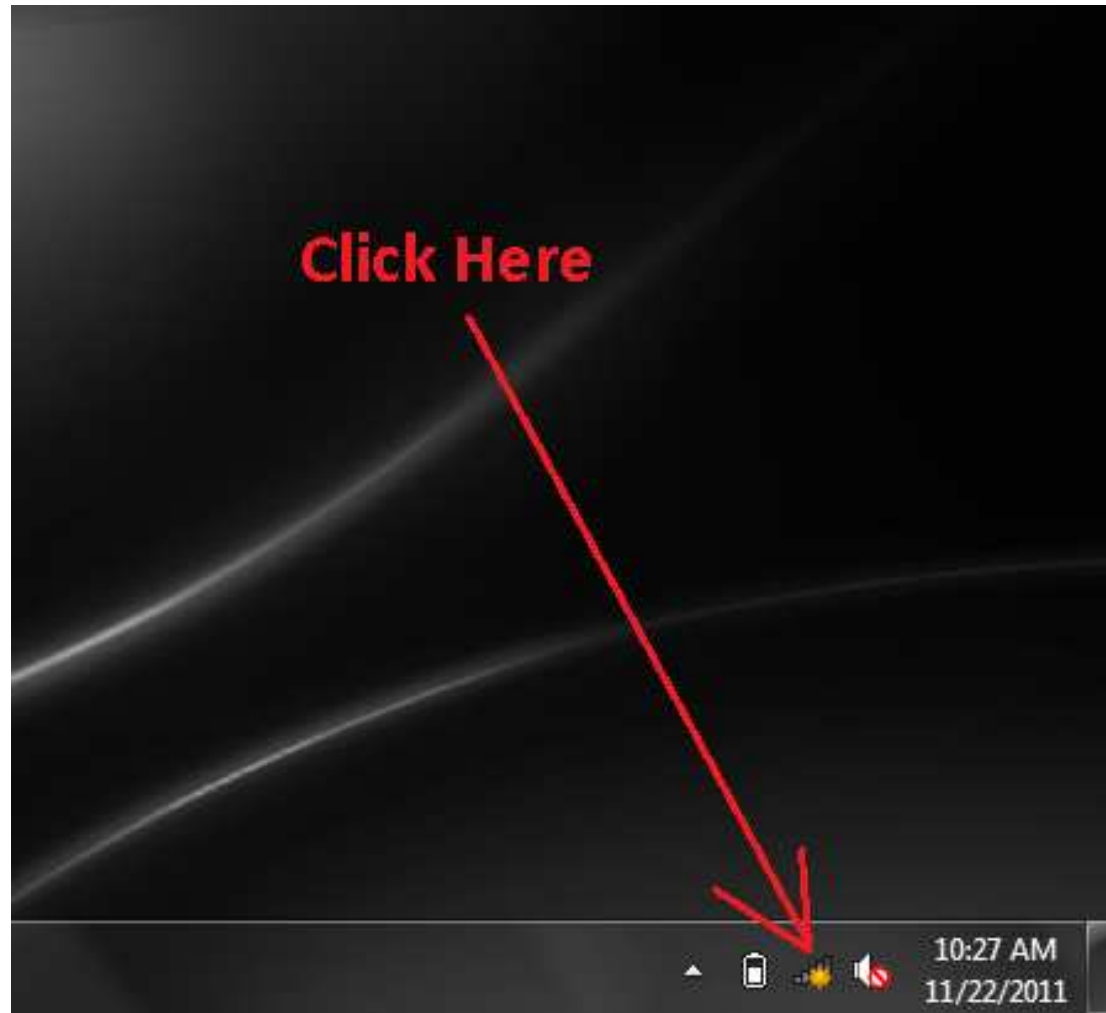
RUSSO INSTITUTE | AUSTRALIA

WIFI Instructions

For Windows & Mac

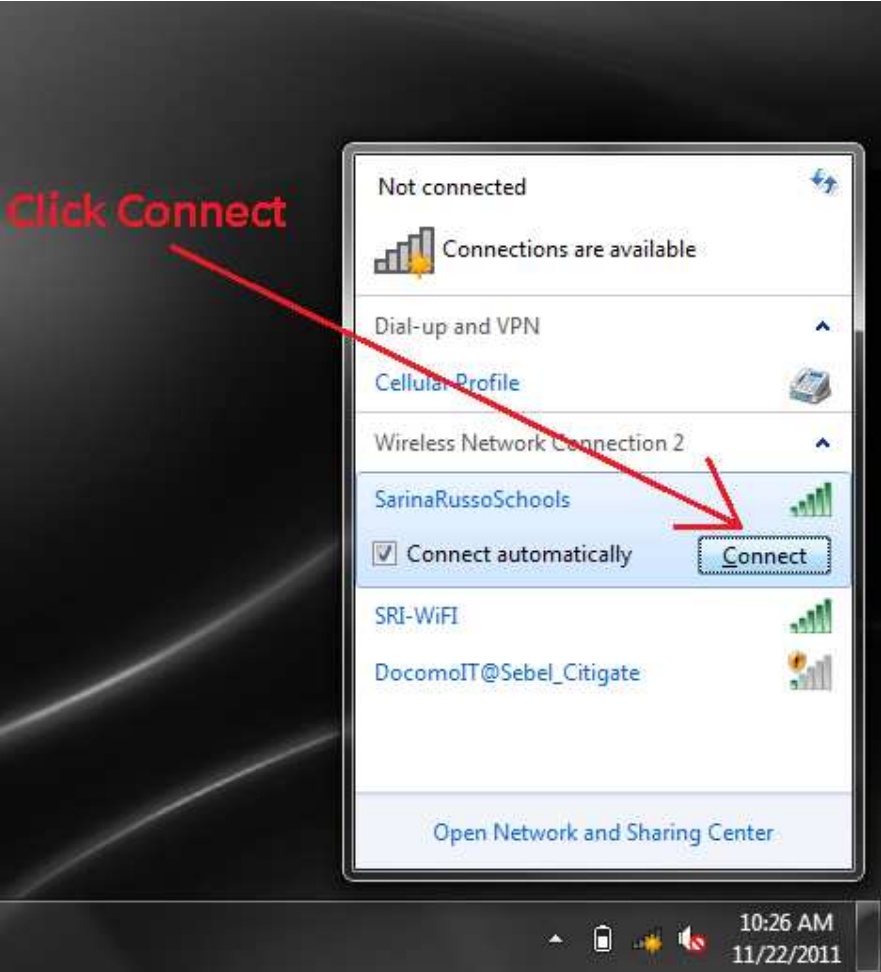


1. Click on Wireless Networks (Make sure your wireless is switched on)





2. Select SarinaRussoSchools from the list of networks and click “Connect”



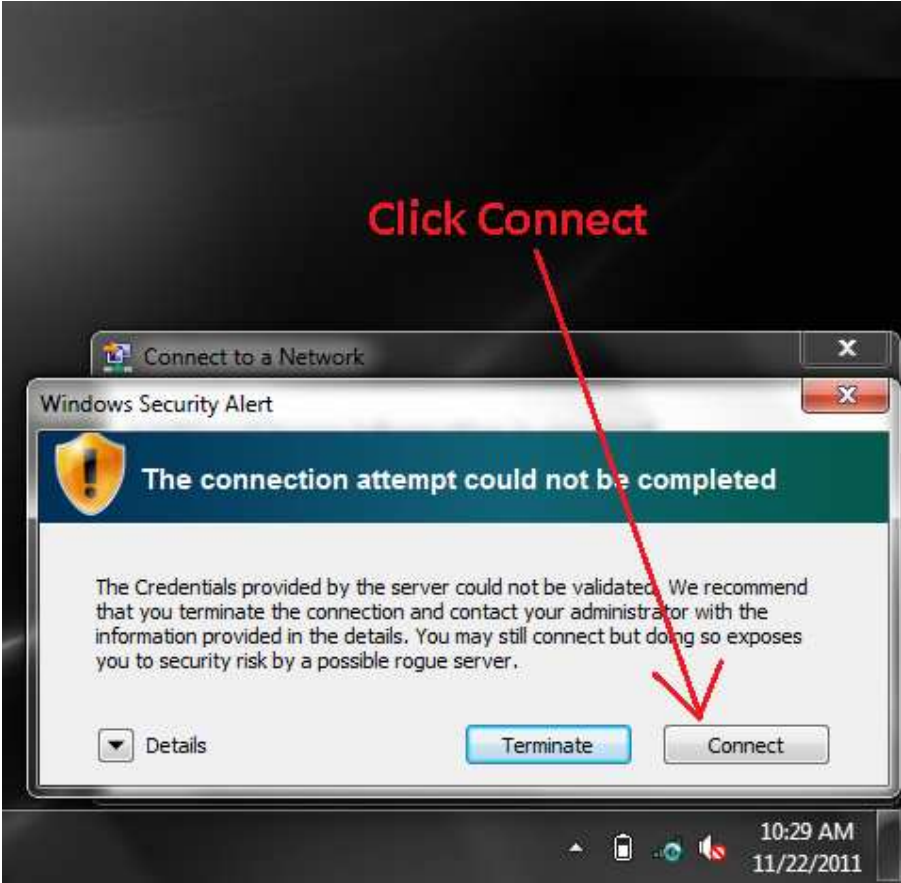


3. Enter your username and password then click OK. (You might have to enter this info twice)





4. If you encounter a Windows Security Alert click Connect





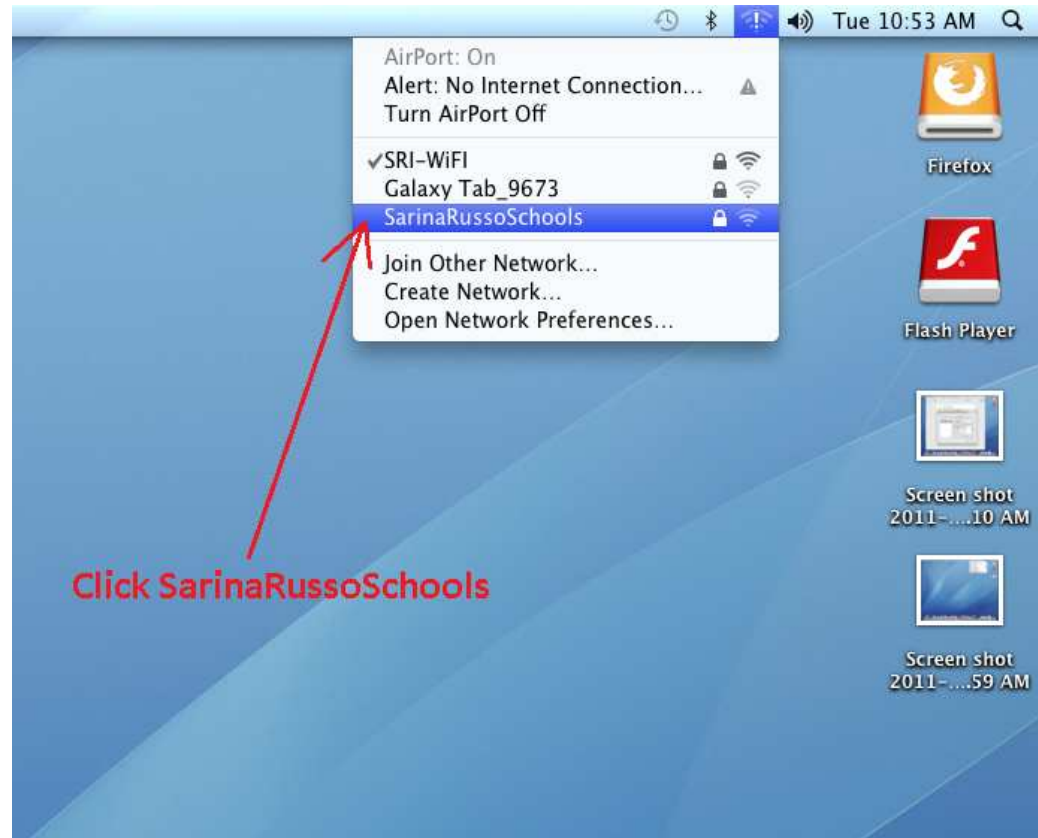
5. Launch Internet Explorer and enter your username and password then click OK.



Click Remember Password (Optional)

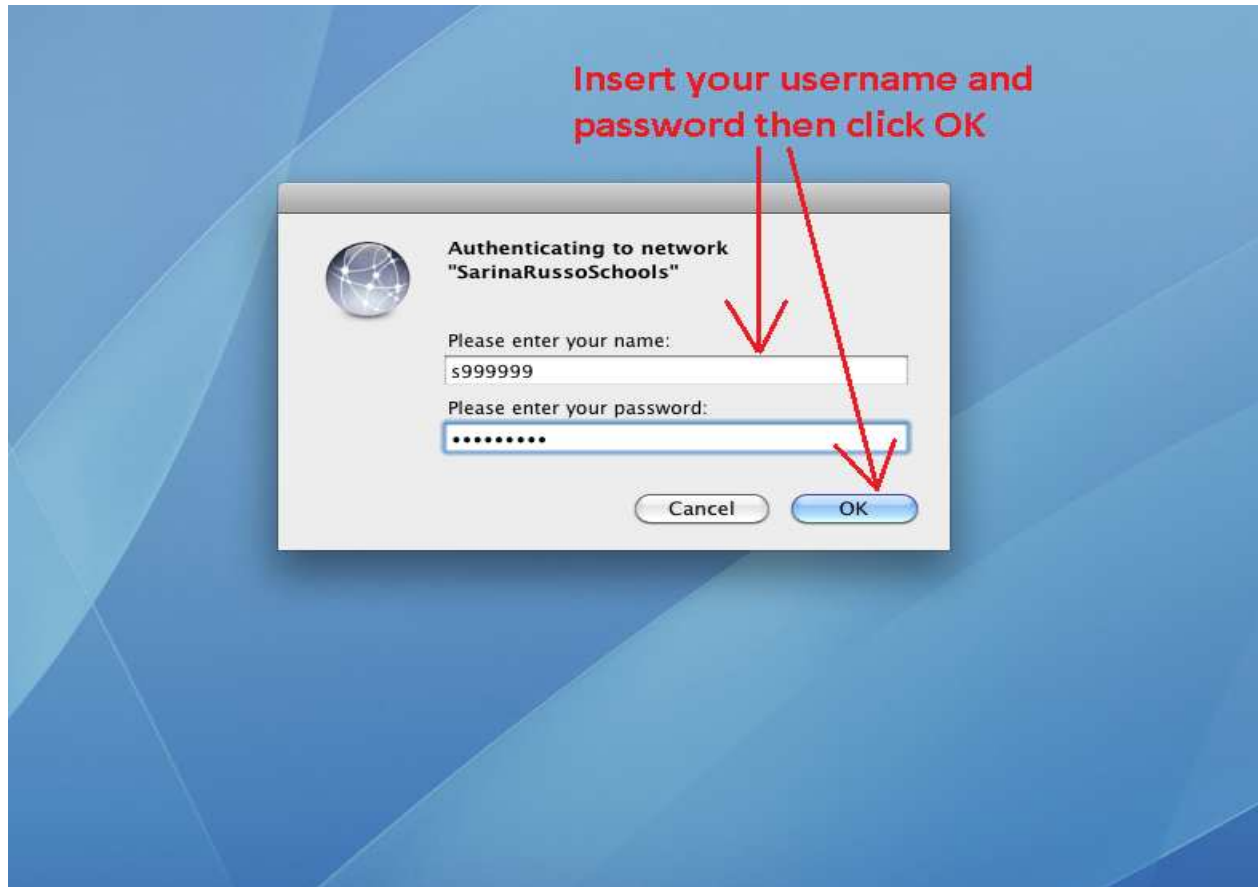


1. From the available Wireless Networks click the SarinaRussoSchools network from the list.





2. Enter your username and password then click OK. (You might have to enter this info twice)



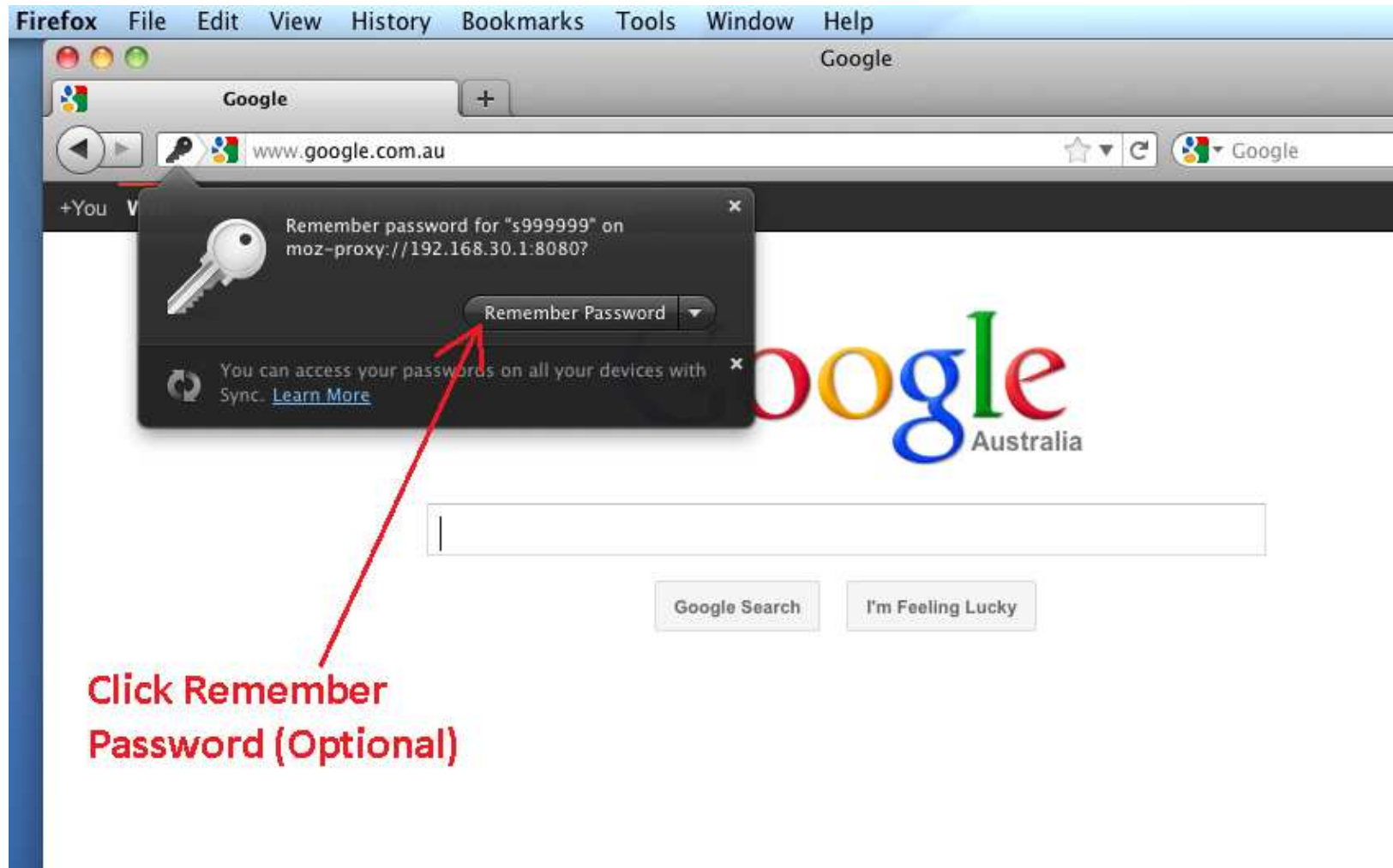


3. Launch Firefox (Safari is not supported). You will then be required to enter your user name and password again & click OK.

Enter your username and password again and click OK



4. Firefox will give you the option to remember your password (Optional)

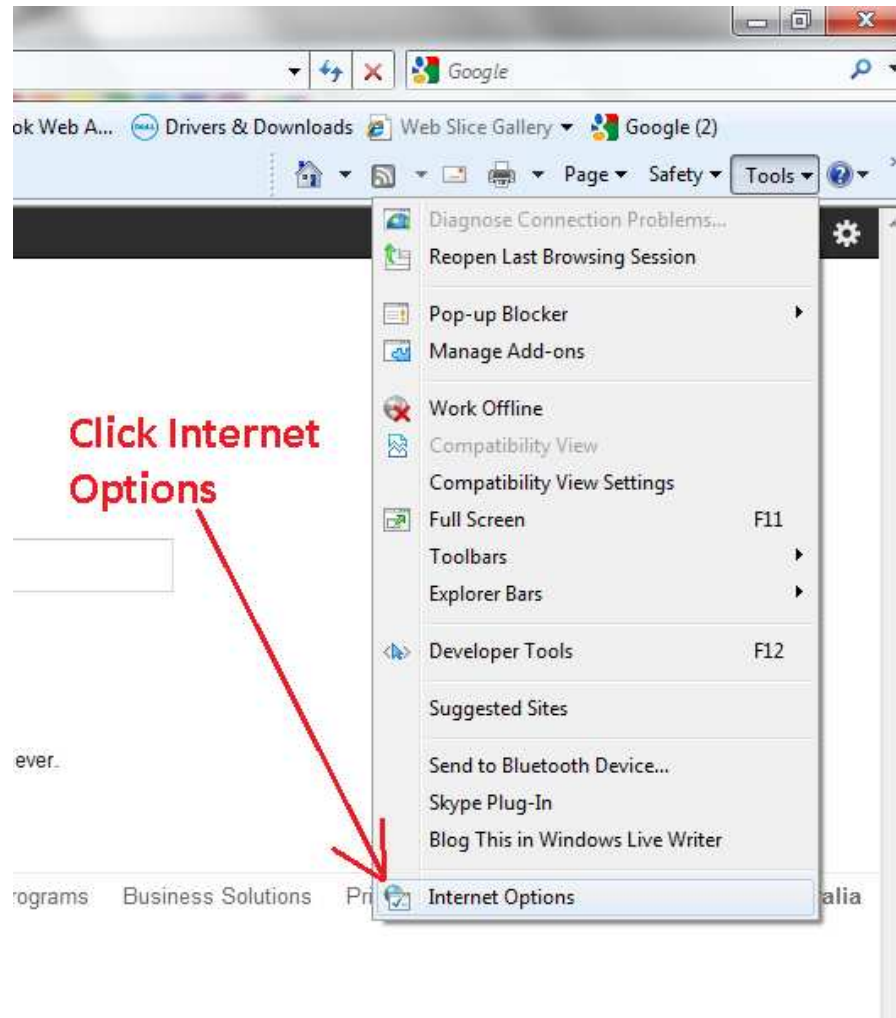


Click Remember Password (Optional)

Troubleshooting Connection Issues

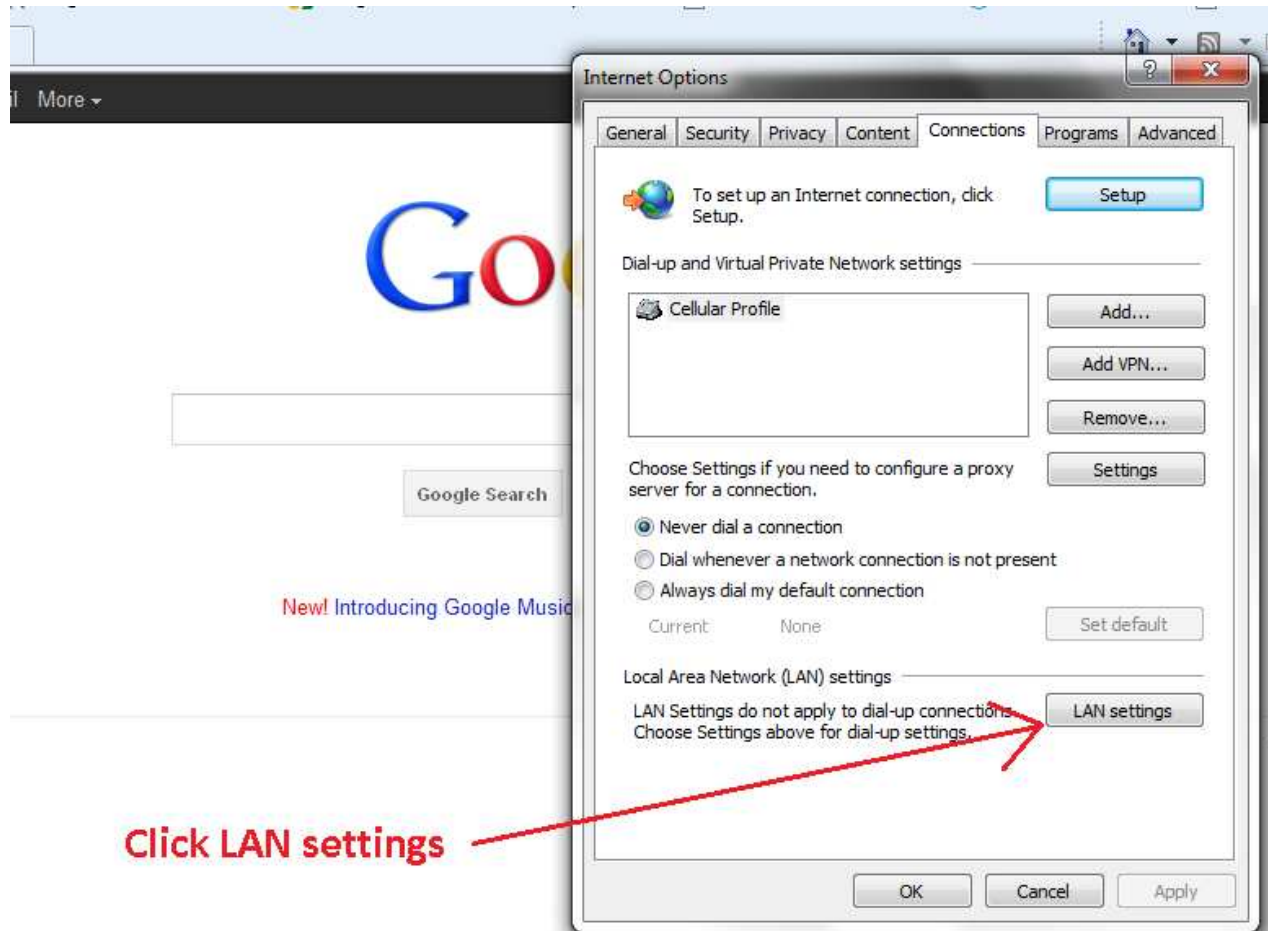


1. Click Internet Options





2. Click Lan settings





3. Ensure the “Automatically detect settings” check box is ticked & click OK twice. (No other options should be ticked)

image

Maps News Gmail More ▾

**Tick "Automatically detect settings"
No other options should be ticked.**

Local Area Network (LAN) Settings

Automatic configuration
Automatic configuration may override manual settings. To ensure the use of manual settings, disable automatic configuration.

Automatically detect settings

Use automatic configuration script

Address:

Proxy server

Use a proxy server for your LAN (These settings will not apply to dial-up or VPN connections).

Address: Port:

Bypass proxy server for local addresses

Internet Options

General Security Privacy Content Connections Programs Advanced

To set up an Internet connection, click Setup.

Dial-up and Virtual Private Network settings

Cellular Profile

Choose Settings if you need to configure a proxy server for a connection.

Never dial a connection

Dial whenever a network connection is not present

Always dial my default connection

Current None

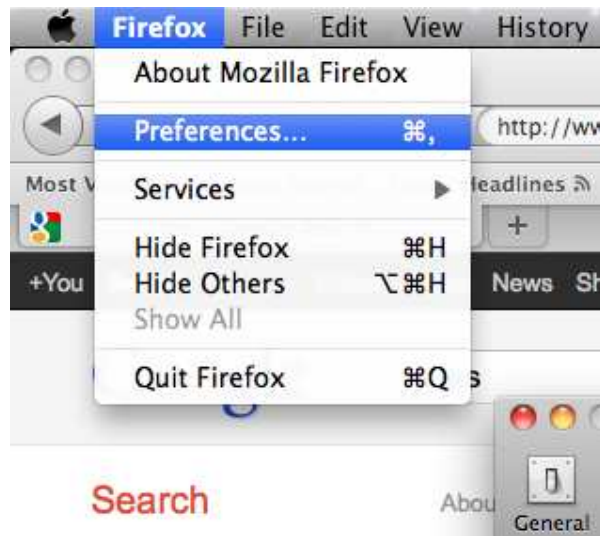
Local Area Network (LAN) settings

LAN Settings do not apply to dial-up connections. Choose Settings above for dial-up settings.

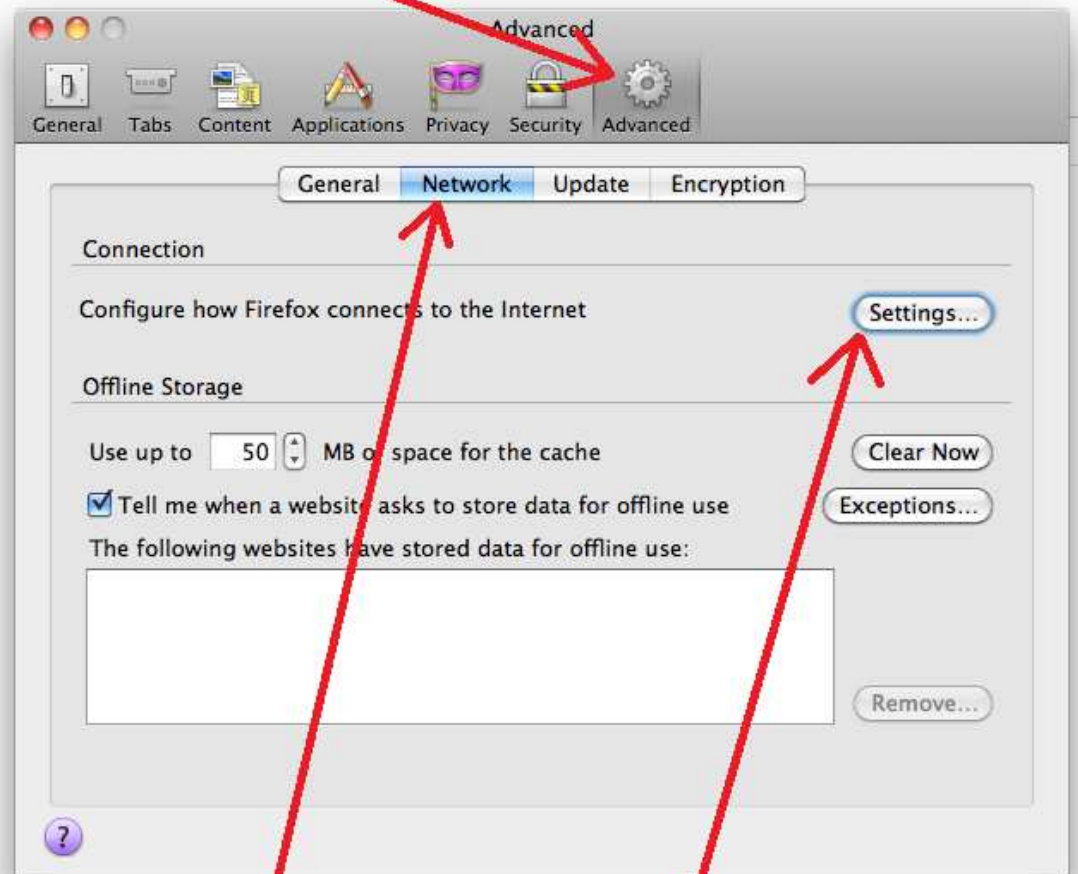
Click OK



1. From the Firefox menu select Preferences, click Advanced, click Network & click Settings.



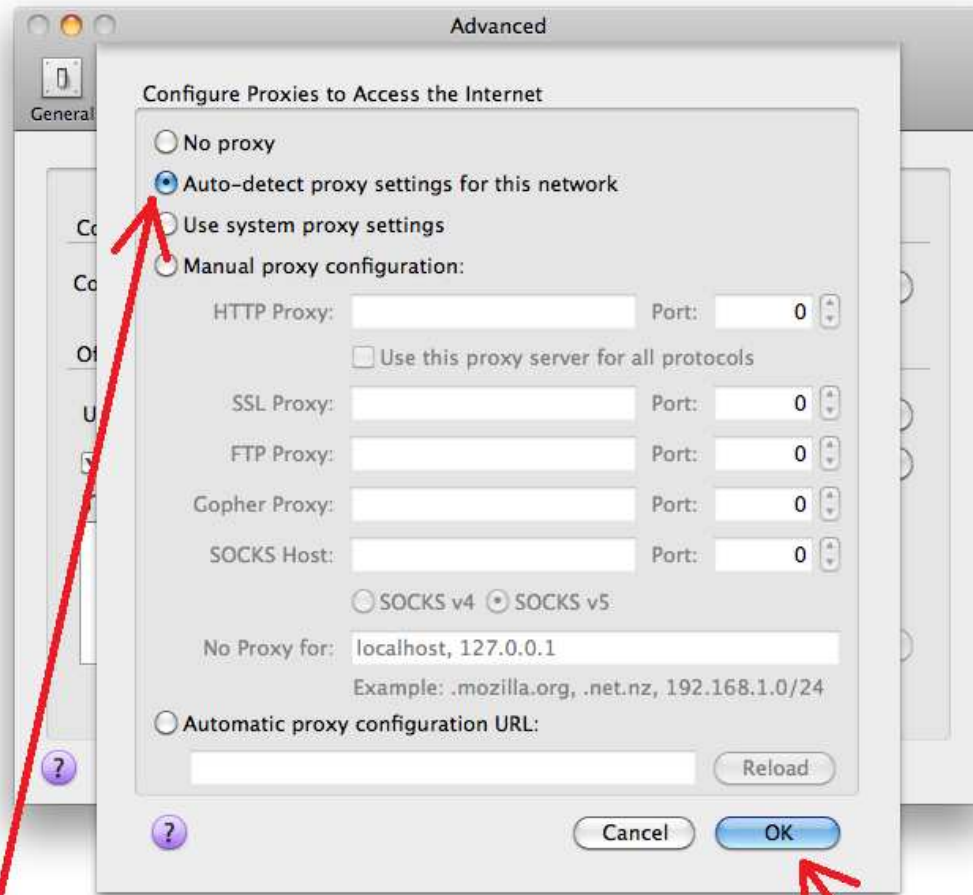
1. Click Advanced



2. Click Network

3. Click Settings

2. Ensure the “Auto-detect proxy settings for this network” is checked & Click OK



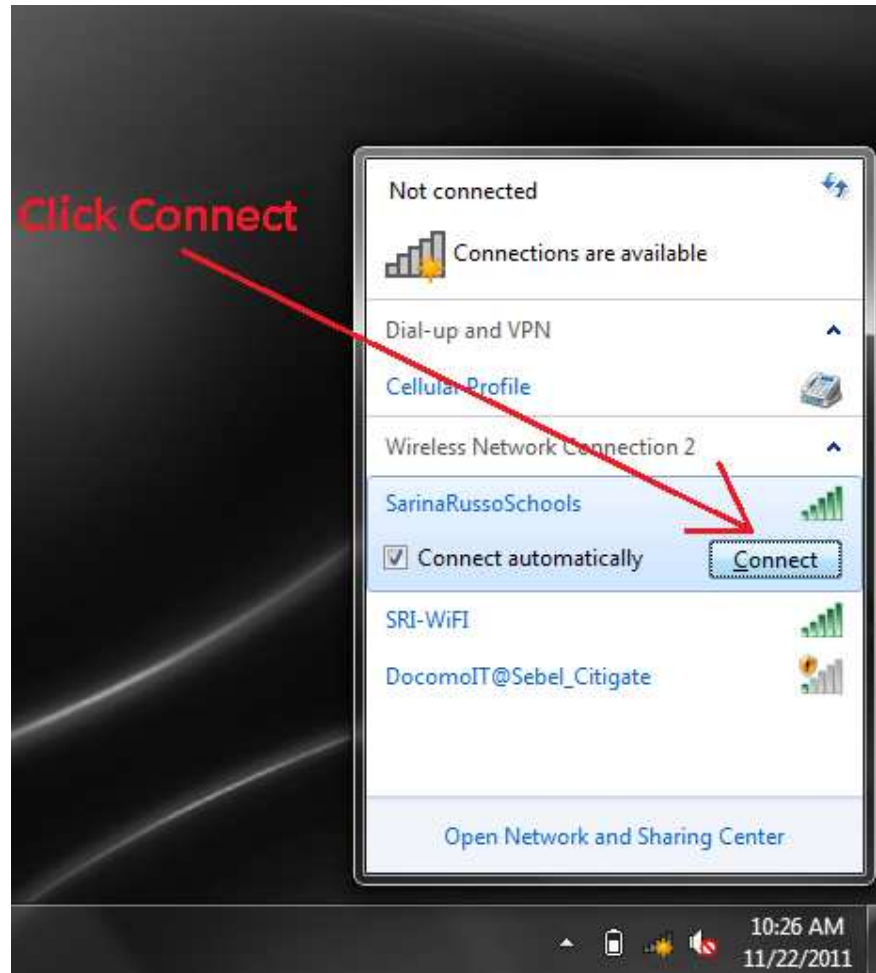
Ensure the "Auto-detect proxy settings for this network" is checked.

Click OK

Procedure if Students Password has been reset



1. Select SarinaRussoSchools from the list of networks and click “Connect”





2. Enter your username and password then click OK. (You might have to enter this info twice)





3. Launch Internet Explorer and enter your username and password then click OK.



1.



Click Remember Password (Optional)



1. From the Airport menu select “Open Network Preferences” then Click Advanced.

The screenshot shows the Mac OS X Network preferences window. The 'AirPort' section is active, showing it is connected to the 'SarinaRussoSchools' network. The 'Advanced...' button at the bottom right of the window is highlighted with an arrow and labeled '2. Click Advanced'. The system menu bar at the top right shows the Airport menu open, with 'Open Network Preferences...' selected and highlighted with an arrow, labeled '1. Open Network Preferences'. The background shows the desktop with several screen shot thumbnails.



2. Update your new Password then click OK

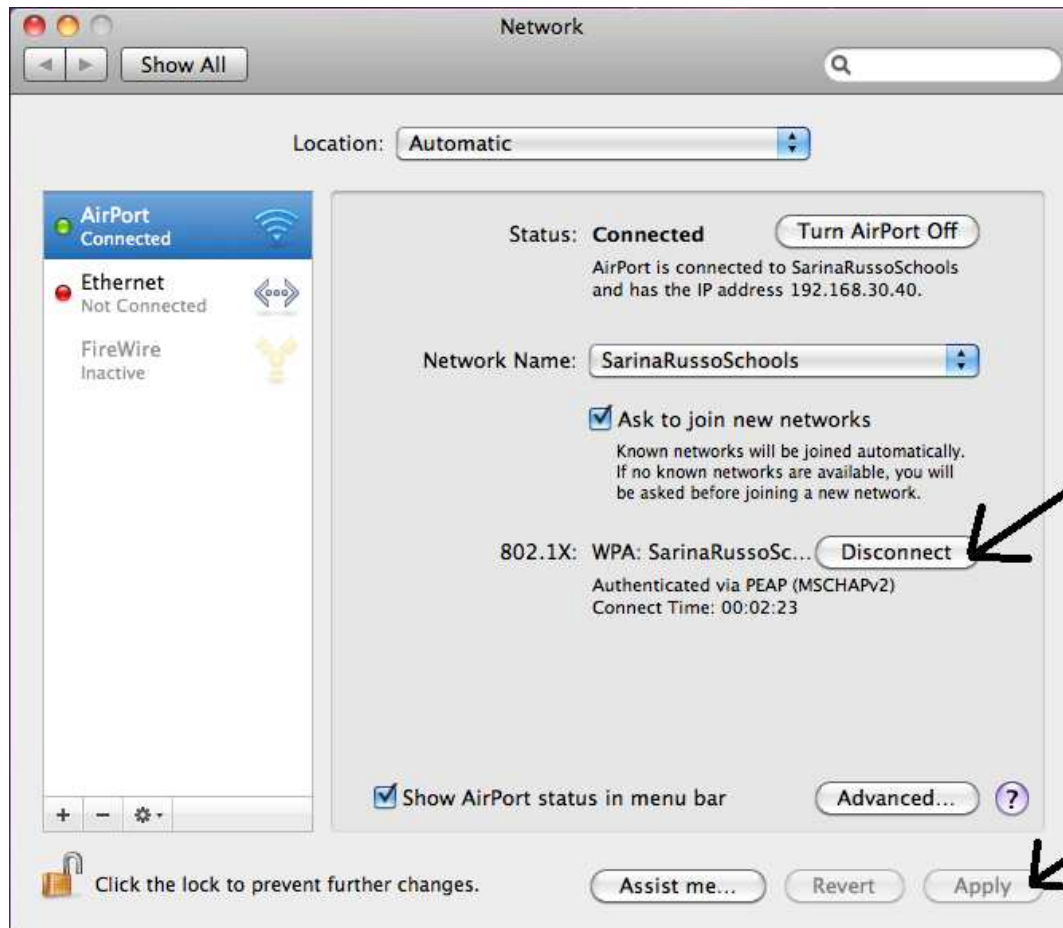
The screenshot shows the 'Network' system preference window for an AirPort network. The '802.1X' tab is active. The 'User Name' field is filled with 's999999'. The 'Password' field is masked with dots. Below the password field, there is a checkbox for 'Always prompt for password' which is unchecked. The 'Authentication' section has a table with 'Enable' and 'Protocol' columns. The 'Enable' column has a checked box, and the 'Protocol' column has a dropdown menu showing 'WPA2 Enterprise'. Below this, there are buttons for 'Configure...' and 'Configure Trust...'. At the bottom, the 'Wireless Network' dropdown is set to 'SarinaRussoSchools' and the 'Security Type' dropdown is set to 'WPA2 Enterprise'. At the very bottom of the window are 'Cancel' and 'OK' buttons. Two arrows with text annotations point to the 'Password' field and the 'OK' button.

1. Updated this field with the new password

2. Click OK



3. Click Apply, then disconnect and re-connect



2. Click Disconnect & then click Connect

1. Click Apply



4. Launch Firefox (Safari is not supported). You will then be required to enter your user name and password again & click OK.

